

Graphing Sine & Cosine
Conclusion #3
Algebra 2

Name _____

Hour _____ Date _____

For question #1-2, graph each function. List the midline equation, domain, range, maximum(s), minimum(s), and midline intercepts.

1. $y = -4\sin\left(\theta - \frac{3\pi}{2}\right) + 2$

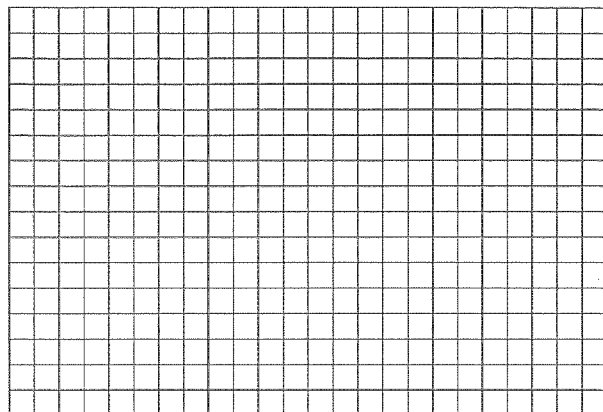
Midline Equation: _____

Domain: _____ Range: _____

Maximum(s) _____

Minimum(s) _____

Midline Intercepts _____



2. $y = 2\cos(4\theta) - 1$

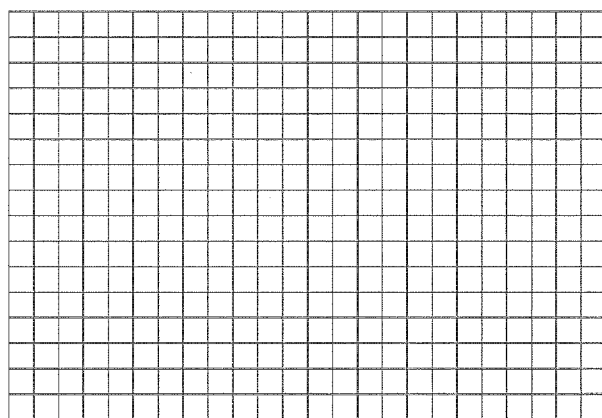
Midline Equation: _____

Domain: _____ Range: _____

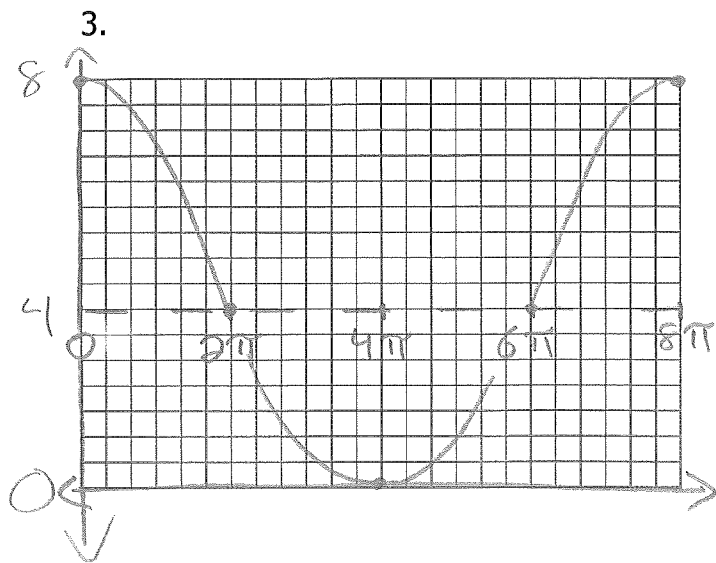
Maximum(s) _____

Minimum(s) _____

Midline Intercepts _____



For #3 & 4, write the equation for each function graphed below. It will help to identify the key information for the graph first: Type, Sign (+/-), Phase Shift, Midline Shift, and amplitude.



Sign (+/-) _____

Amplitude _____

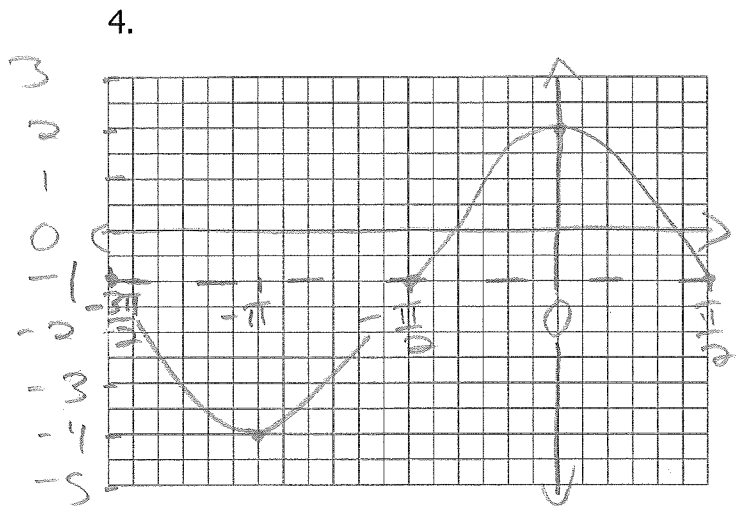
Type _____

Period _____

Phase Shift _____

Midline Shift _____

Equation _____



Sign (+/-) _____

Amplitude _____

Type _____

Period _____

Phase Shift _____

Midline Shift _____

Equation _____