

Graphing Sine and Cosine Conclusion #1
HW
Trigonometry
Algebra 2

Name _____

Hour _____ Date _____

1. For the function $y = 2\sin\left(\theta - \frac{\pi}{2}\right) - 1$, identify the vertical shift, amplitude, period, and phase shift. Graph the function.

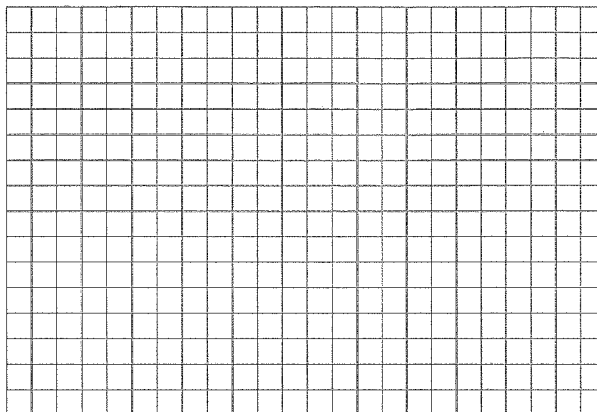
Vertical Shift _____

Amplitude _____

Phase Shift _____

Period _____

Add _____



2. For the function $y = -3\cos\left(\frac{1}{2}\theta\right) + 1$, identify the vertical shift, amplitude, period, and phase shift. Graph the function.

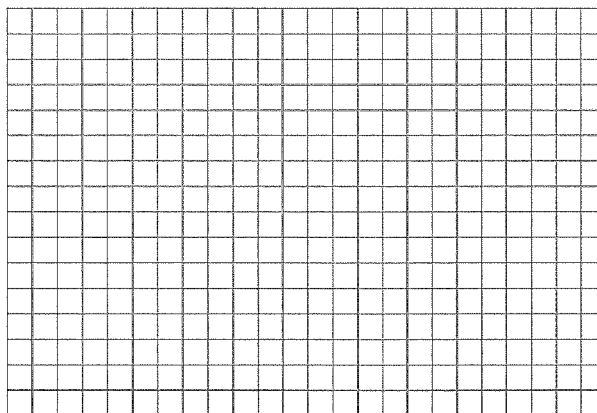
Vertical Shift _____

Phase Shift _____

Amplitude _____

Period _____

Add _____



3. For the function $y = -\sin(4\theta) + 2$, identify the vertical shift, amplitude, period, and phase shift. Graph the function.

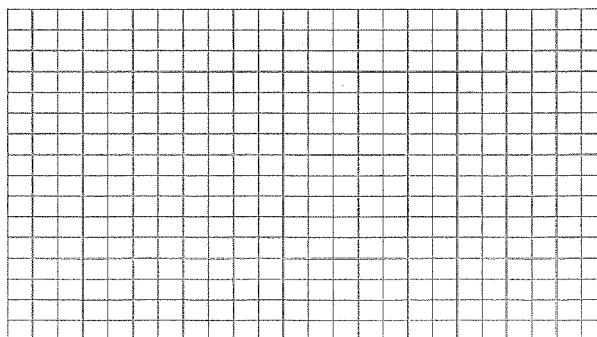
Vertical Shift _____

Amplitude _____

Phase Shift _____

Period _____

Add _____



4. For the function $y = 2\cos(2\theta) - 2$, identify the vertical shift, amplitude, period, and phase shift. Graph the function.

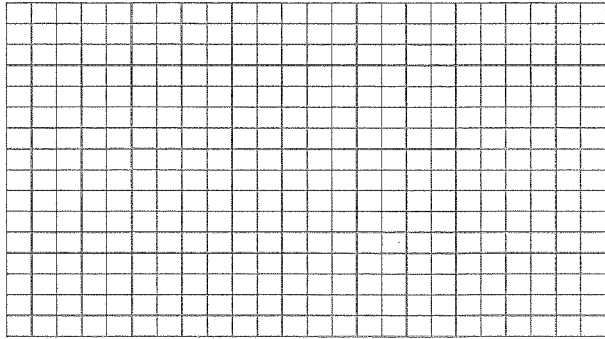
Vertical Shift _____

Amplitude _____

Phase Shift _____

Period _____

Add _____



5. For the function $y = -3\sin\left(\theta + \frac{3\pi}{2}\right) - 1$, identify the vertical shift, amplitude, period, and phase shift. Graph the function.

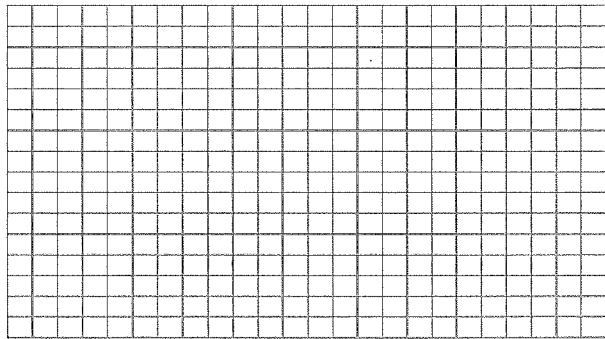
Vertical Shift _____

Amplitude _____

Phase Shift _____

Period _____

Add _____



6. For the function $y = \cos(3\theta) + 4$, identify the vertical shift, amplitude, period, and phase shift. Graph the function.

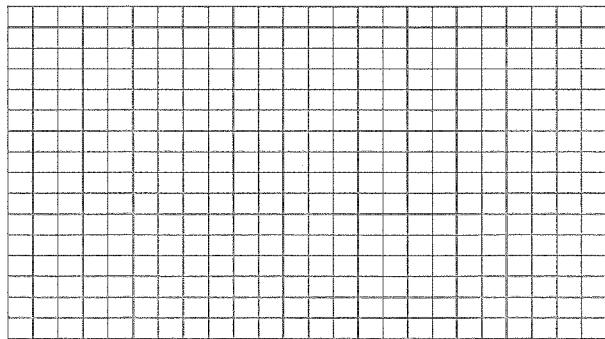
Vertical Shift _____

Amplitude _____

Phase Shift _____

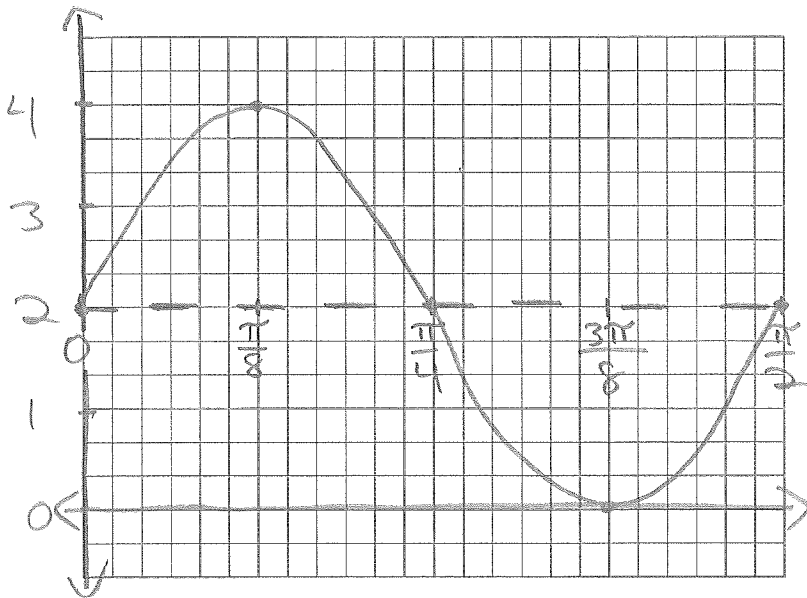
Period _____

Add _____



For Question #7-10, write the equation for the function that is graphed.

7.



+/- _____

Amp _____

Type _____

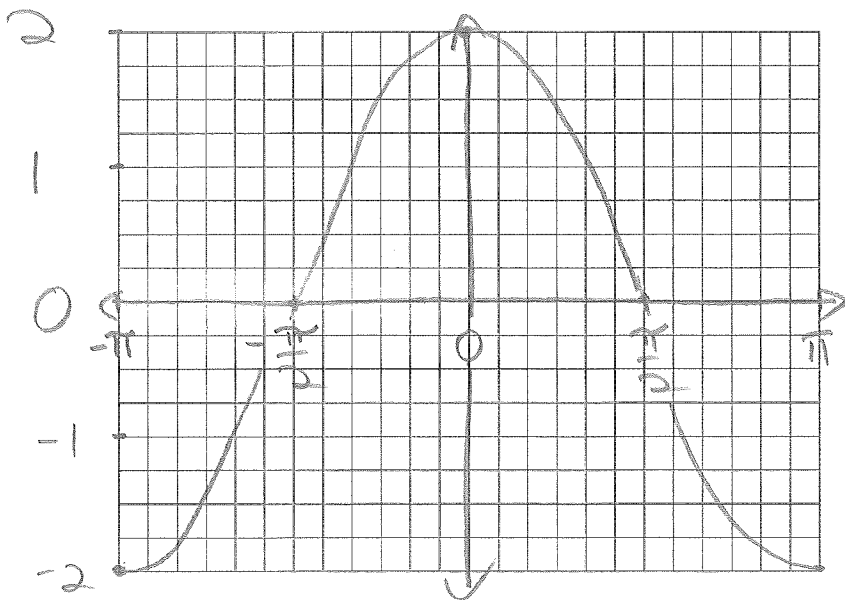
Period # _____

Phase Shift# _____

Vertical Shift # _____

Equation _____

8.



+/- _____

Amp _____

Type _____

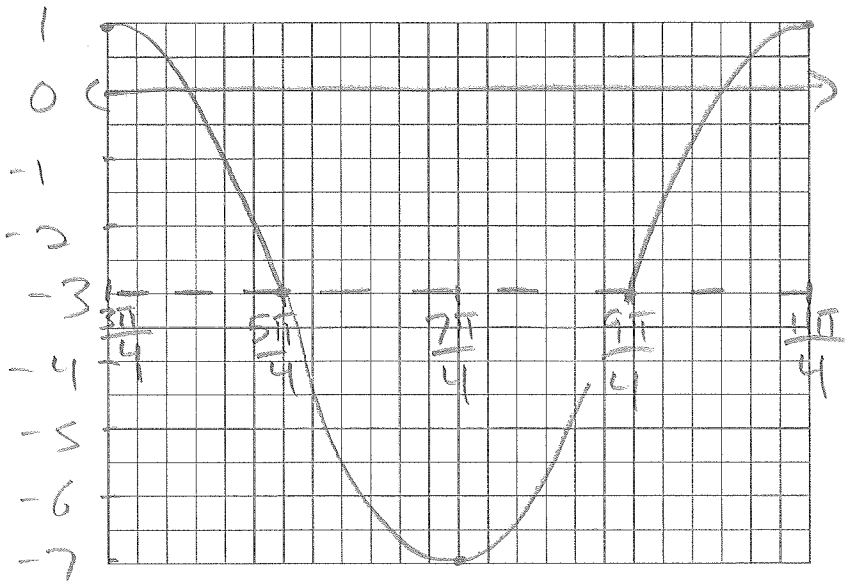
Period # _____

Phase Shift# _____

Vertical Shift # _____

Equation _____

9.



+/- _____

Amp _____

Type _____

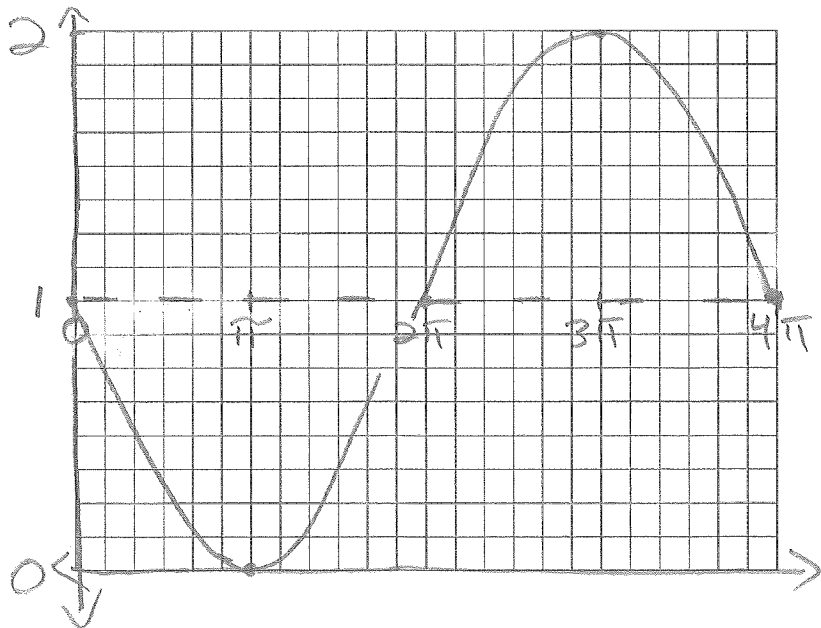
Period # _____

Phase Shift# _____

Vertical Shift # _____

Equation _____

10.



+/- _____

Amp _____

Type _____

Period # _____

Phase Shift# _____

Vertical Shift # _____

Equation _____